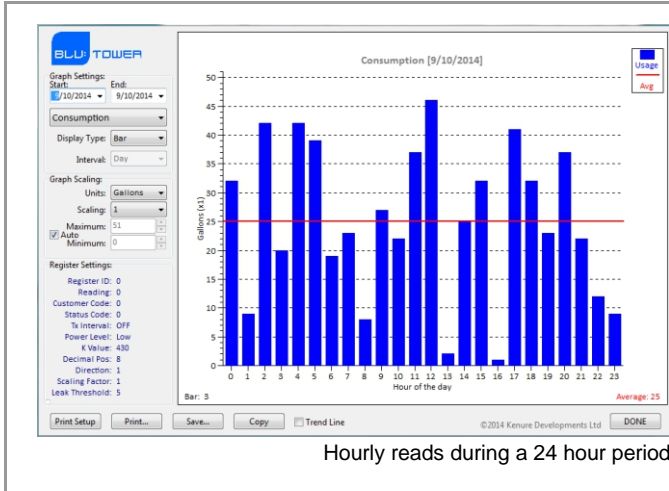


BluMet Datalogging Interface (PRO)

Features and Benefits

- ⇒ Quick configuration of BluMet registers to integrate with most meter brands
- ⇒ Compact size for handheld operation
- ⇒ Quick and easy installation
- ⇒ Able to extract and manipulate 90 days of hourly datalogging
- ⇒ Reports can be saved to assist with customer disputes
- ⇒ Database saves meter information



Application

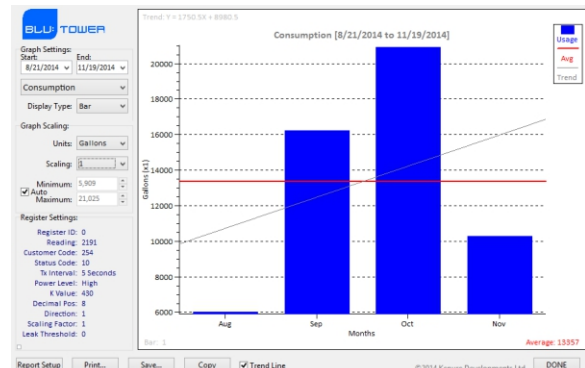
BluTower's Datalogging Interface is a simple handheld unit used to program BluMet DataLogging registers and also extract datalogging information from these registers. The easy plug-in design allows for a secure uninterrupted connection to a register in the office or in the field. This datalogging interface unit is powered either through a USB port or a 9V battery.

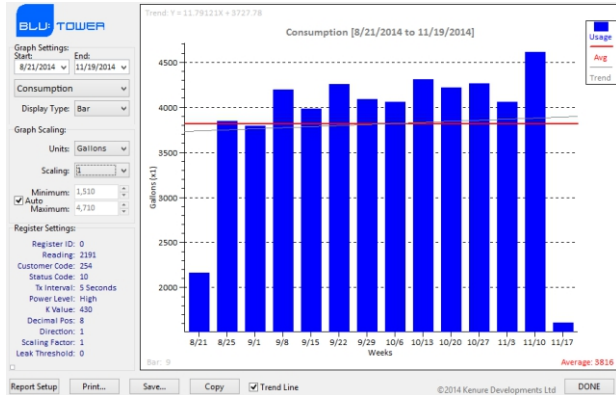


DataLogging

BluTower's Datalogging Interface allows utilities to extract up to 90 days of hourly reads. Graphical data of the readings and consumption are easily manipulated. This feature allows customers to target questionable reads, by clicking on the interactive graph display.

Customers can quickly generate monthly, weekly, daily or hourly graphs from the previous 90 days worth of datalogging. There is also the ability to select user-defined start and end dates.

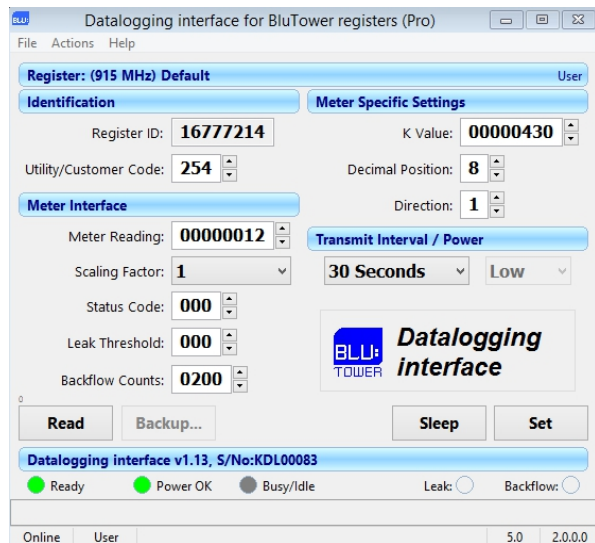




Weekly reads over a 90 day period

There are many variables that are adjustable to facilitate the investigation of questionable reads. Reports can be saved in multiple formats as well as printed in order to assist with customer disputes.

Configuring BluMet DataLogging Registers



Many parameters can be changed with the Datalogging interface software which gives water utilities total control over how their system is read. With Datalogging interface, a water utility is able to program BluMet registers for use on their existing Performance, Sensus, Badger, Neptune and Elster-AMCO meters, thereby securing their investment in these meters.

The register ID can be changed as required and the scaling factor can be adjusted to facilitate with the intergration of data into different billing systems.

Part Numbers	
Description	Part Number
BluMet Datalogging, Low Power, 2 Pole	BTBMR-2L
BluMet Datalogging, Low Power, 4 Pole	BTBMR-4L
BluMet Datalogging, High Power, 2 Pole	BTBMR-2H
BluMet Datalogging, High Power, 4 Pole	BTBMR-4H
BluMet Datalogging Interface Unit	BTBMDL
Datalogging Software, 1 st User License	BTBMDLS1
DataLogging Software, 2 nd User License	BTBMDLS2

©2014 BluTower, Inc. All rights reserved. Names, brand names and product names are the property of their respective holder(s). BluTower, Inc. reserves the right to change specifications, packaging, or other product information without notice. This publication could include technical inaccuracies or typographical errors.

BluTower, Inc.
 2855 South Pine Ave.
 Ocala, FL 34471
 Tel: 352-624-8695
 Fax: 352-624-8696

Email: infoweb@blutower.com
 Web: www.blutower.com

